

LOCATION MAP - nts

Florida Building Code, Building, 8th Edition (2023) effective December 31, 2023.
 All building permit applications submitted on or after December 31, 2023 must comply with the 8th Edition FBC.

**FLORIDA BUILDING CODE 8 TH EDITION,
 FLORIDA FIRE PREVENTION CODE 8 TH. EDITION
 AND 2020 NATIONAL ELECTRIC CODE (NFPA70).**

- 2023 FLORIDA BUILDING CODE , BUILDING, 8 TH. EDITION.
- 2023 FLORIDA BUILDING CODE, RESIDENTIAL, 8 TH. EDITION.
- 2023 FLORIDA TEST PROTOCOLS FOR HIGH VELOCITY HURRICANE ZONES, 8 TH. EDITION.
- 2023 FLORIDA BUILDING CODE, ACCESSIBILITY, 8 TH. EDITION.
- 2023 FLORIDA BUILDING CODE, ENERGY CONSERVATION, 8 TH. EDITION.
- 2023 FLORIDA BUILDING CODE, PLUMBING, 8 TH. EDITION.
- 2023 FLORIDA BUILDING CODE, MECHANICAL, 8 TH. EDITION.
- 2023 FLORIDA BUILDING CODE, FUEL GAS, 8 TH. EDITION.
- 2023 FLORIDA BUILDING CODE, EXISTING BUILDING, 8 TH. EDITION.

GENERAL NOTES:

BUILDER SHALL COORDINATE ALL THE WORK OF ALL THE TRADES.

BUILDER, SUBCONTRACTOR, SUPPLIER, ECT. SHALL VERIFY ALL DIMENSIONS, CONDITIONS AT JOBSITE, PLANS, SPECIFICATIONS, ETC. PRIOR TO STARTING ANY WORK AND WITHIN SEVEN (7) CALENDAR DAYS OF BUILDERS RECEIPT OF THESE PLANS SHALL NOTIFY FLEMING & ASSOCIATES ARCHITECTURAL DESIGN, INC. (IN WRITING ONLY) OF ANY AND ALL DISCREPANCIES (WHETHER DISCREPANCIES ARE ERRORS OF COMMISSION OR OMISSION OR NOT). OTHERWISE FLEMING & ASSOCIATES ARCHITECTURAL DESIGN, INC. WILL ASSUME NO RESPONSIBILITY FOR ANY ERRORS, AND THE BUILDER, SUB CONTRACTOR, SUPPLIER, ETC. SHALL ASSUME FULL RESPONSIBILITY FOR ANY ERRORS AND CORRECT ERRORS AT THEIR OWN EXPENSE.

CONTRACTOR IS RESPONSIBLE FOR ALL STRUCTURAL COORDINATION AND SHALL NOTIFY FLEMING & ASSOCIATES ARCHITECTURAL DESIGN, INC. OF ANY DISCREPANCIES.

FLEMING & ASSOCIATES ARCHITECTURAL DESIGN, INC. DOES NOT HAVE ANY FIELD SUPERVISION NOR CONSTRUCTION ADMINISTRATION ON THIS PROJECT. ALL CONTRACTORS AND SUBCONTRACTORS SHALL HOLD HARMLESS FLEMING & ASSOCIATES FOR ANY PERSONAL INJURY OR DAMAGE TO THE PROJECT OR TO ADJACENT PROPERTIES AND OMISSIONS.

FINAL CLEANING
 AT PROJECT CLOSEOUT TIME, CLEAN OR PRE CLEAN ENTIRE WORK TO NORMAL LEVEL FOR " FIRST CLASS" MAINTENANCE / CLEANING OR BUILDING PROJECTS OF SIMILAR NATURE. REMOVE NON-PERMANENT PROTECTIONS AND LABELS, POLISH GLASS, CLEAN EXPOSED SURFACE, TOUCH-UP MINOR DAMAGE, REPLACE FILERS, REMOVE DEBRIS, REPLACE BURNED OUT LIGHTS.

COPYRIGHT © 2026

THE DRAWINGS, DESIGNS AND INFORMATION REPRESENTED HEREIN ARE THE EXCLUSIVE PROPERTY OF FLEMING & ASSOCIATES ARCHITECTURAL DESIGN INC. AND ARE NOT TO BE USED, DUPLICATED OR OTHERWISE COPIED WITHOUT THE WRITTEN PERMISSION OF FLEMING & ASSOCIATES ARCHITECTURAL DESIGN, INC. UNAUTHORIZED USE WILL BE PROSECUTED.

TENANT SPACE FOR:
LVL FITNESS WELLNESS NAPLES, LLC
 2160 AIRPORT ROAD NORTH (UNIT 105)
 NAPLES FLORIDA 34105

INDEX OF DRAWINGS:

- 1) COVER SHEET / PROJECT GENERAL INFORMATION
- 2) REVISED FLOOR PLAN / NOTES
- 3) REVISED ELECTRICAL PLAN
- 4) LIFE SAFETY PLAN
- 5) UL 419 RATED TENANT SEPARATION WALL
- 6) TYPICAL WALL SECTIONS

SEE ATTACHED M.E.P. (SUPPLIED BY REEB ENGINEERING)
 PHONE (239) 389-0078

ADA SIGN FACTORY
 MANUFACTURER-DIRECT • MADE IN THE USA

Shop Account 1-888-232-7491 GET A CUSTOM QUOTE>

BUILDING SIGNS RESTROOM SIGNS STATE COMPLIANT SIGNS CUSTOM ADA SIGNS

40,000+ ADA SIGNS IN-STOCK AND READY-TO-SHIP! FREE USA GROUND SHIPPING ON ALL STOCK SIGN ORDERS \$\$\$

EXIT SALE! **EXIT SMALL SIGN**
 \$13.00 - \$34.00 \$9.95 - \$31.95

COLOR BLUE / WHITE

DESCRIPTION
 A federal ADA-compliant sign made from durable, vandal-proof, high-impact CAD-cut acrylic.
 Available in five stock colors plus MetalGraph, LaserGlow and 40+ custom colors at an upcharge.
 Sign size: 6 inches wide x 3 inches high x 1/16 inches thick with square corners (or 1/8 inches thick on Steel or Copper MetalGraph and LaserGlow).
 Tactile graphics raised 1/32 inch above base.
 Easy-to-read lettering in a high-contrast color, 5/8 inch tall.
 Dome-shaped Grade 2 Braille meets CA Title 24 requirements.
 Adhesive foam mounting strips included on the back to hang sign on wall.
 A made-to-order sign that ships within 5 business days for the standard color options shown.
 Custom Color Options ship within 10 business days. SEE CUSTOM COLORS>

**TACTILE SIGNAGE AT EACH EXIT DOOR
 LOCATE ON LATCH SIDE OF DOOR 48" TO 60" ABOVE FLOOR**

PROJECT DATA

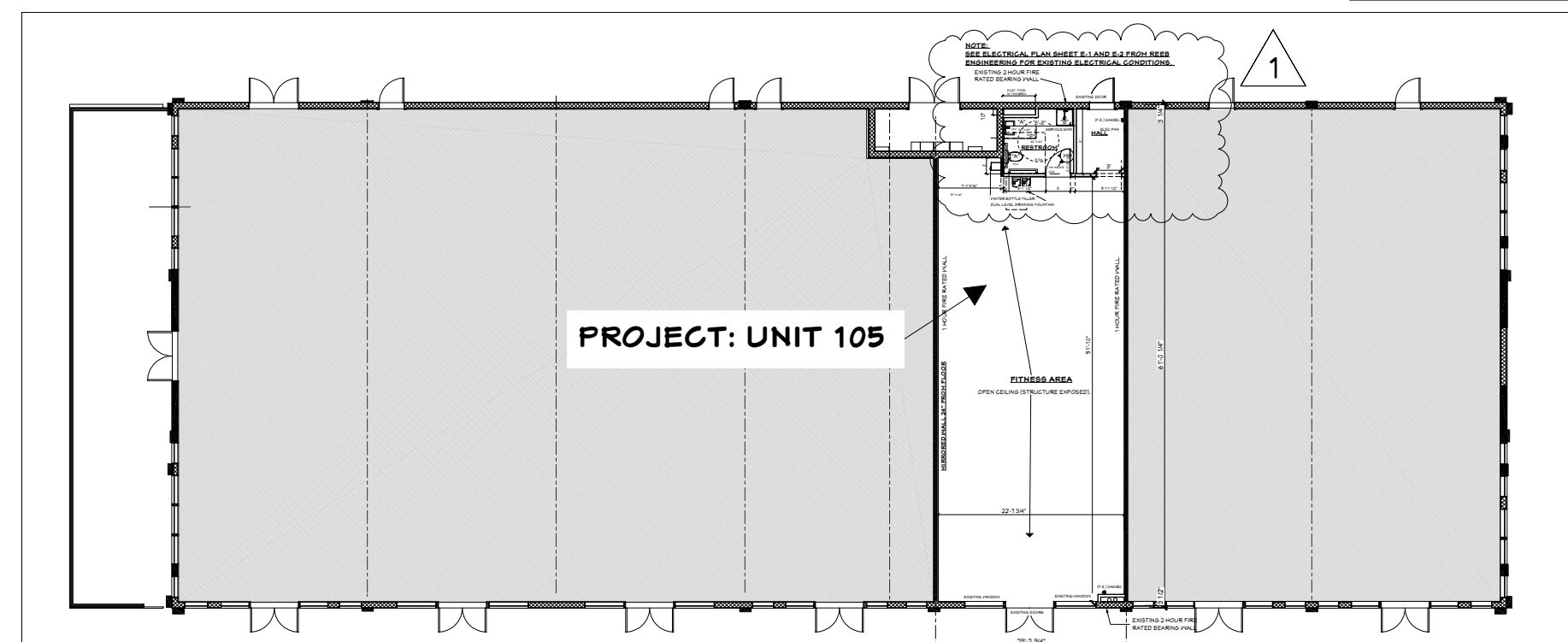
SQUARE FOOTAGE (GROSS): 1376

OCCUPANCY GROUP: ASSEMBLY A-3

OCCUPANCY LOAD:
 USE - EXERCISE WITHOUT EQUIPMENT (PER NFPA) 1260 SQ. FT. (NET) / 15 = 84
 OVER 50 OCCUPANCY LOAD - TWO EXITS REQUIRED

FLOOD ZONE INFO:
 BASE FLOOD ZONE 9.0 NAVD (AE9)
 DESIGN FLOOD ELEVATION 10.0
 LOWEST FLOOR ELEVATION 10.1 NAVD

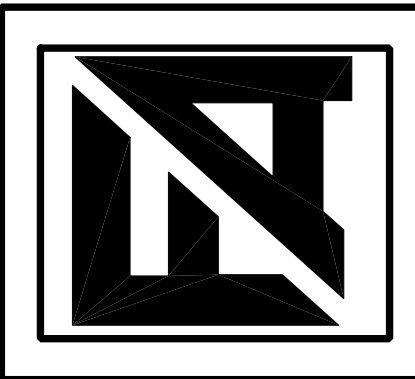
TYPE OF CONSTRUCTION: IIIB FIRE SPRINKLERED NFPA 13 ONE STORY BUILDING



OVERALL SHELL BUILDING - EXISTING FLOOR PLAN
PLAZA HALSTATT BUILDING
 2160 AIRPORT RD. NORTH NAPLES, FL.
 SCALE 1" = 20'-0"

REVISION 1 : 3-30-2026 TC 1 CODE COMPLIANCE REVIEW 3-27-2026

FLEMING & ASSOCIATES
 ARCHITECTURAL DESIGN
 INC. 1047 5 TH. AVENUE NORTH
 NAPLES, FLORIDA 34102
 TEL: (239) 495-1102 E-MAIL: ARCFLEMING@YAHOO.COM
 LIC # AA 002690



TENANT SPACE FOR:
LVL FITNESS WELLNESS NAPLES, LLC
 2160 AIRPORT ROAD NORTH (UNIT 105)
 NAPLES FLORIDA 34105



DRAWN T.C.
CHECKED B.F.
DATE 3-12-26
SCALE AS SHOWN
JOB NO. 26020
SHEET 1 OF 6

PROJECT DATA

SQUARE FOOTAGE (GROSS): 1376

OCCUPANCY GROUP: ASSEMBLY A-3

OCCUPANCY LOAD:

USE - EXERCISE WITHOUT EQUIPMENT (PER NFPA) 1260 SQ. FT. (NET) / 15 = 84
OVER 50 OCCUPANCY LOAD - TWO EXITS REQUIRED

FLOOD ZONE INFO:

BASE FLOOD ZONE 9.0 NAVD (AE9)

DESIGN FLOOD ELEVATION 10.0

LOWEST FLOOR ELEVATION 10.1 NAVD

TYPE OF CONSTRUCTION: IIIB FIRE SPRINKLERED NFPA 13 ONE STORY BUILDING

1

10.2.7 Interior Floor Finish Testing and Classification.

10.2.7.1 Carpet and carpetlike interior floor finishes shall comply with ASTM D 2859, *Standard Test Method for Ignition Characteristics of Finished Textile Floor Covering Materials*.

10.2.7.2* Floor coverings, other than carpet for which 10.2.2.2 establishes requirements for fire performance, shall have a minimum critical radiant flux of 0.1 W/cm².

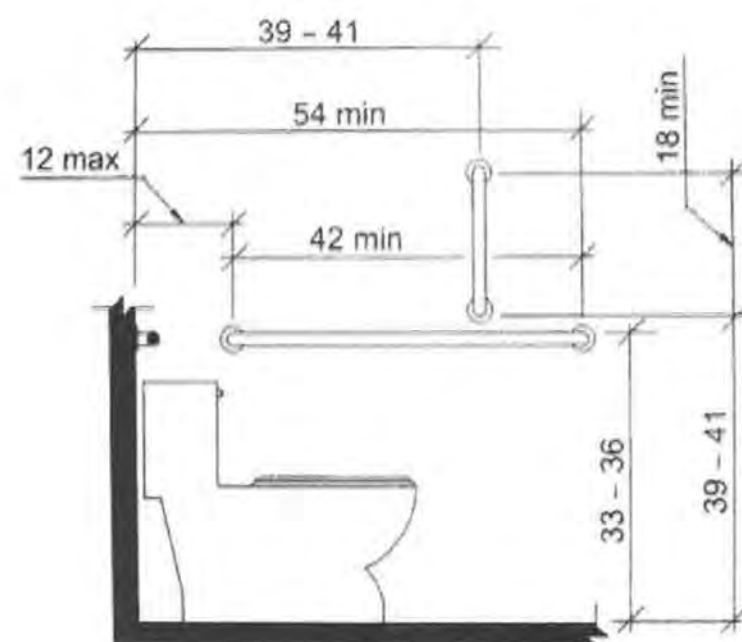
10.2.7.3* Interior floor finishes shall be classified in accordance with 10.2.7.4, based on test results from NFPA 253, *Standard Method of Test for Critical Radiant Flux of Floor Covering Systems Using a Radiant Heat Energy Source*, or ASTM E 648, *Standard Test Method for Critical Radiant Flux of Floor Covering Systems Using a Radiant Heat Energy Source*.

10.2.7.4 Interior floor finishes shall be classified as follows in accordance with their critical radiant flux values:

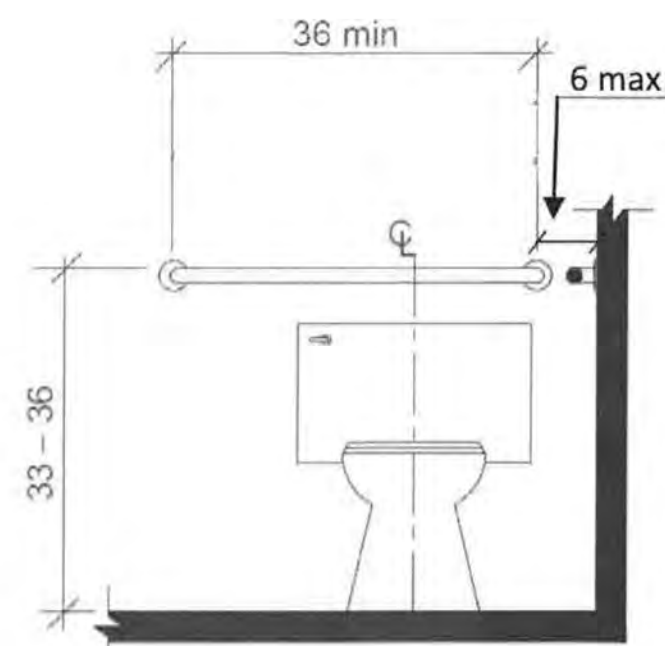
- (1) Class I interior floor finish shall be characterized by a critical radiant flux not less than 0.45 W/cm², as determined by the test described in 10.2.7.3.
- (2) Class II interior floor finish shall be characterized by a critical radiant flux not less than 0.22 W/cm² but less than 0.45 W/cm², as determined by the test described in 10.2.7.3.

10.2.7.5 Wherever the use of Class II interior floor finish is required, Class I interior floor finish shall be permitted.

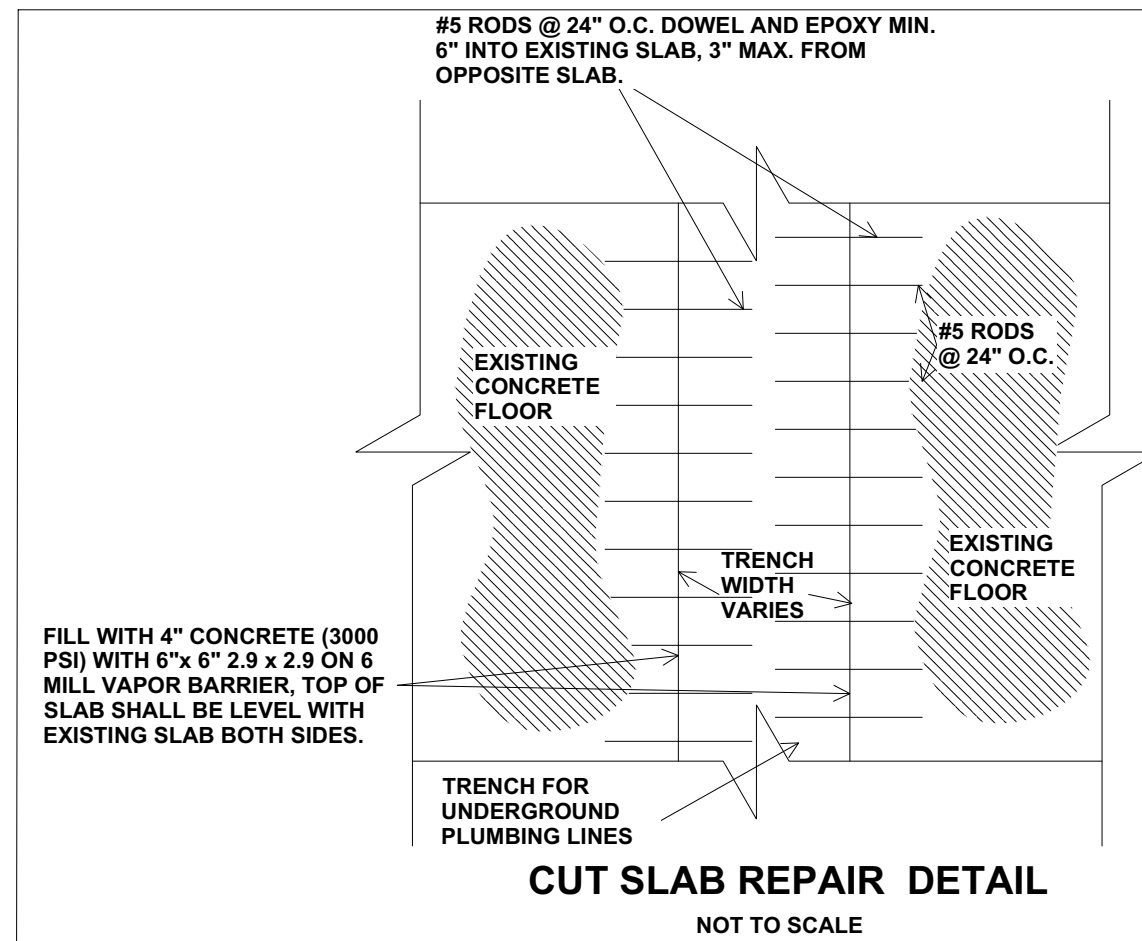
ADA Grab Bar Requirements



Side Wall Grab Bar



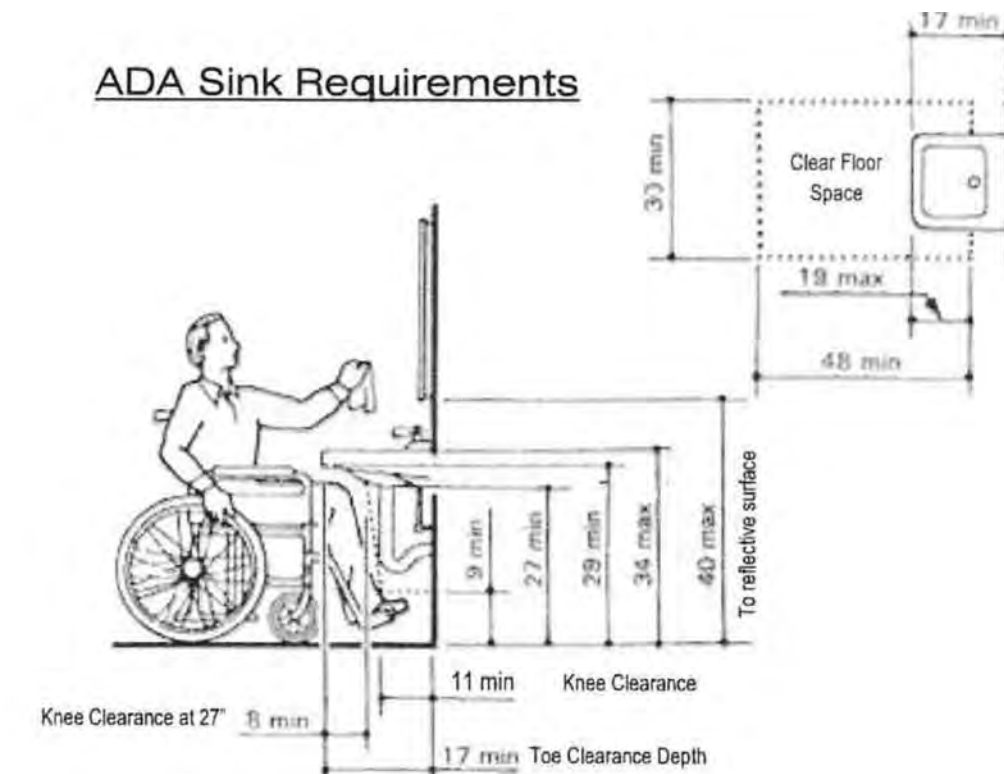
Rear Wall Grab Bar



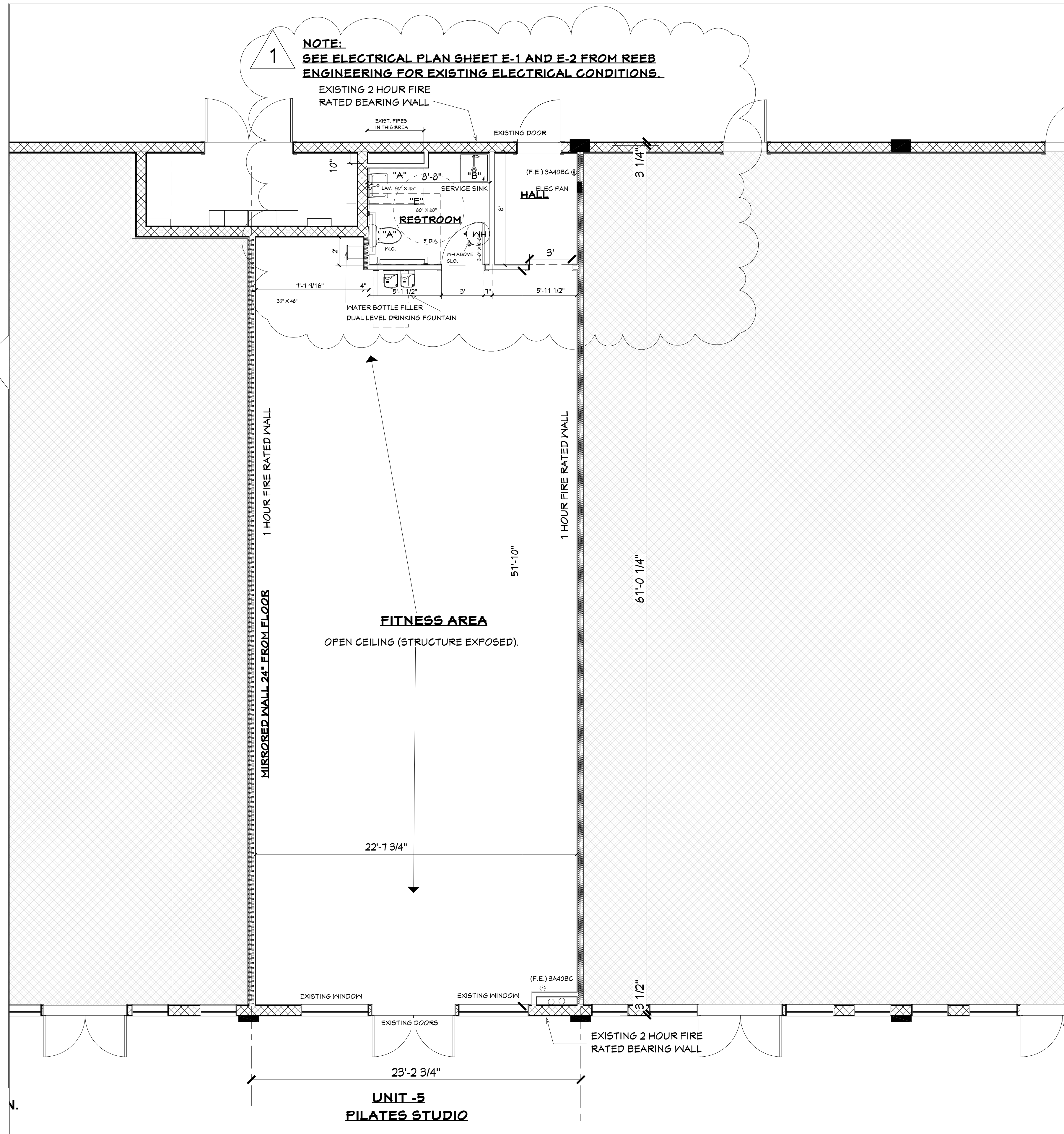
CUT SLAB REPAIR DETAIL
NOT TO SCALE

VERIFY MOUNTED MIRROR INSTALLATION

ADA Sink Requirements



RESTROOM DETAILS (N.T.S.)



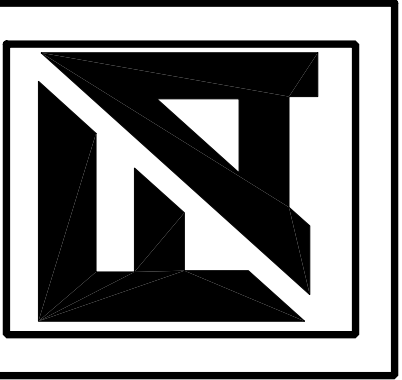
REVISED FLOOR PLAN (SCALE 1/4" = 1'-0")

NOTE:
SEE ELECTRICAL PLAN SHEET E-1 AND E-2 FROM REEB ENGINEERING FOR EXISTING ELECTRICAL CONDITIONS.

EXISTING 2 HOUR FIRE RATED BEARING WALL

1

FLEMING & ASSOCIATES
ARCHITECTURAL DESIGN
INC. 1047 5 TH. AVENUE NORTH
NAPLES, FLORIDA 34102
TEL: (239) 495-1102 E-MAIL: ARCFLEMING@YAHOO.COM
LIC # AA 002690



TENANT SPACE FOR:
LVL FITNESS WELLNESS NAPLES, LLC.
2160 AIRPORT ROAD NORTH (UNIT 105)
NAPLES FLORIDA 34105



DRAWN
T.C.
CHECKED
B.F.
DATE
3-12-26
SCALE
AS SHOWN
JOB NO.
26020

SHEET
2
OF 6

COPYRIGHT © 2026

THE DRAWINGS, DESIGNS AND INFORMATION REPRESENTED HEREIN ARE THE EXCLUSIVE PROPERTY OF FLEMING & ASSOCIATES ARCHITECTURAL DESIGN INC. AND ARE NOT TO BE USED, DUPLICATED OR OTHERWISE COPIED WITHOUT THE WRITTEN PERMISSION OF FLEMING & ASSOCIATES ARCHITECTURAL DESIGN, INC. UNAUTHORIZED USE WILL BE PROSECUTED.

REVISION 1 : 3-30-2026 TC 1 CODE COMPLIANCE REVIEW 3-27-2026

ULINE 1-800-295-5510

My Account | Contact Us | Sign In | Cart \$0.00

Search

Products Uline Brand Quick Order Catalog Request Special Offers About Us Careers

Home > All Products > Warehouse Equipment / Supplies > Exit Signs and Emergency Lights > Plastic Hard-Wired Exit Signs

Hard-Wired Exit Sign - Plastic with Emergency Lights, Red Letters

Safely mark all exits, even in power failures.

- High intensity, adjustable LED lamps go on when the power goes off.
- For office, restaurant and retail areas.
- 1.5 hour back-up battery for power outages. Battery automatically recharges.
- Hard-wired units stay lit.
- Bright long-life LED never needs changing.
- Single or double-sided signs can be ceiling, wall or flush mounted. Arrows snap out.

CL More Images

MODEL NO.	DESCRIPTION	LETTER COLOR	SIZE H x W x D	PRICE EACH	IN STOCK SHIPS TODAY
H-9045	Plastic w/ Lights	Red	8 1/2 x 21 x 4"	\$115 \$105	95 1 ADD

120/277 VAC, UL/C-UL LISTED.

Avalon Self-Cleaning Bottleless Water Cooler Water Dispenser - 3 Temperature Settings - Hot, Cold & Room Water, Durable Stainless Steel Cabinet, NSF Certified Filter-UL Listed

Visit the Avalon Store

5.8 (1,804)

1K+ bought in past month

Brand Avalon

Product 14"D x 12"W x 41"H Dimensions

About this item

- **INSTALLATION KIT:** Full installation kit consisting of 20' of 1/4" tubing, 3 way plastic 1/4" push connect adapter, under sink 3/8" adapter with shut off valve, filter flushing adapter, and detailed instructions with illustrations.
- **DUAL FILTRATION:** Patented Dual filters are included with the water cooler. This consists of a Sediment filter (listed as model Avalon ADFILTER) and a Carbon Block filter (listed as model Avalon ADFILTER) which will last 6 months or 1500 gallons.
- **THREE TEMPERATURES:** Three temperature settings allow you to customize your drinking experience. This dispenser features a crisp cold, cool, or piping hot output.
- **BOTTLELESS:** Our water cooler is bottleless and will reduce the cost of constant purchases of water. The

BOTTLELESS WATER COOLER

Oasis Versacooler II Bi-Level Refrigerated Drinking Fountain 8 GPH Stainless Steel

Item #D282561 Model #D282561

Shop Oasis

DUAL LEVEL DRINKING FOUNTAIN

White Utility Sink Laundry Tub with High Arc Chrome Faucet for Laundry Room Basement, Garage, Shop

Visit the JS Jackson Supplies Store

4.2 (599) | Search this page

SERVICE SINK with extension hose to fill mop bucket

Color: White

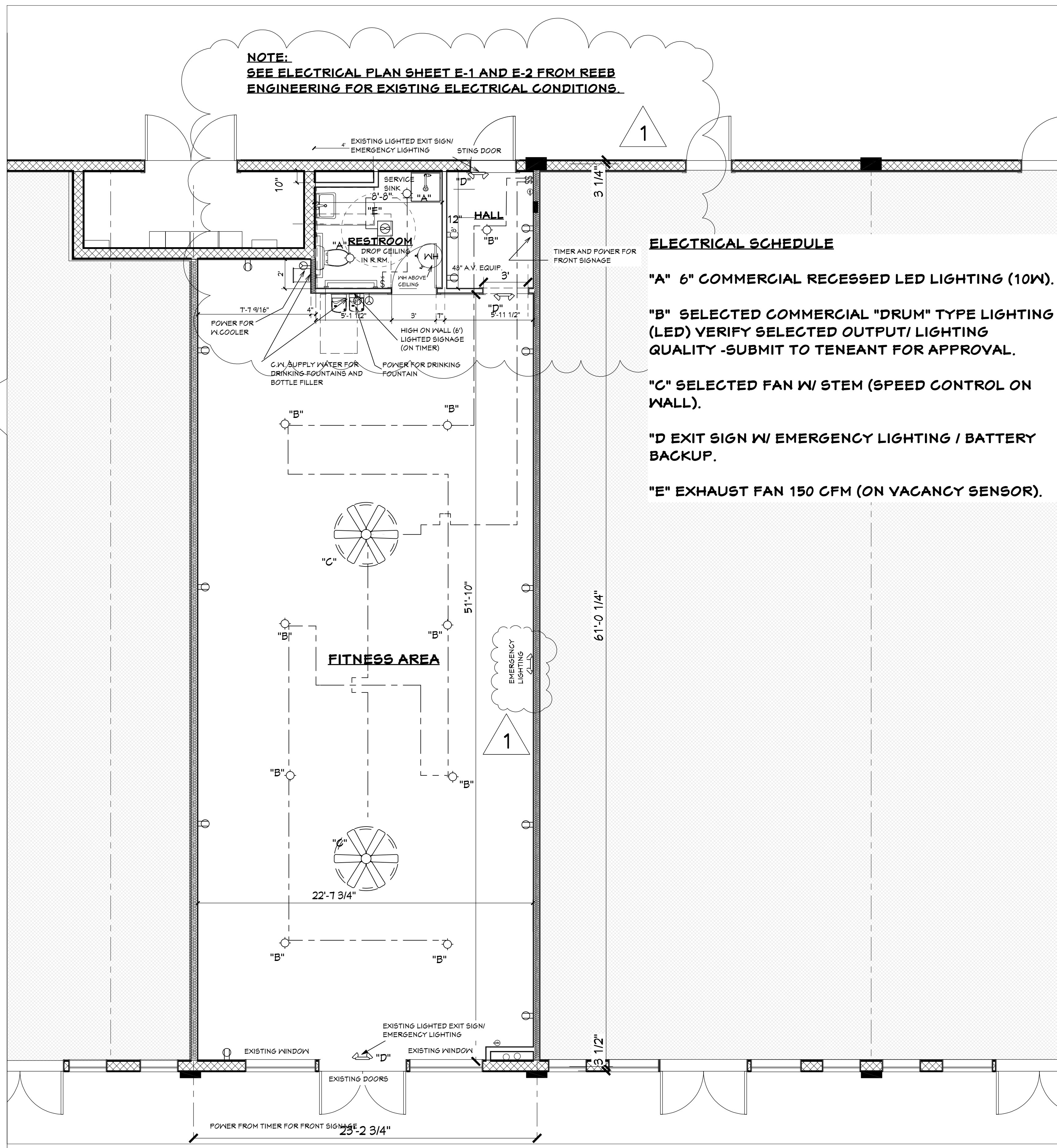
Brand JS Jackson Supplies

Color White

Material Polypropylene

Size Large

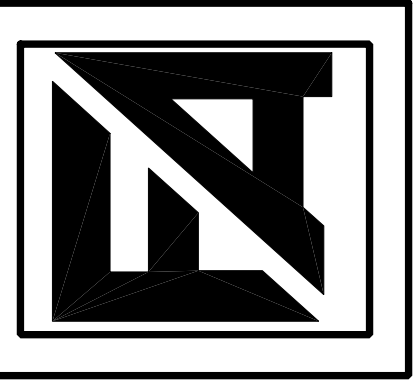
Product Dimensions 23.5"D x 22.98"W x 49.75"H



REVISED ELECTRICAL PLAN (SCALE 1/4" = 1'-0")

1/4" = 1'-0"

FLEMING & ASSOCIATES
 ARCHITECTURAL DESIGN
 INC. 1047 5 TH. AVENUE NORTH
 NAPLES, FLORIDA 34102
 TEL: (239) 495-1102 E-MAIL ARCFLEMING@YAHOO.COM
 LIC # AA 0002690



TENANT SPACE FOR:
 LVL FITNESS WELLNESS NAPLES, LLC.
 2160 AIRPORT ROAD NORTH (UNIT 105)
 NAPLES FLORIDA 34105



DRAWN T.C.
CHECKED B.F.
DATE 3-12-26
SCALE AS SHOWN
JOB NO. 26020

SHEET
 3
 OF 6

Classified by Underwriters Laboratories, Inc. to ANSIUL 2079

System No. HW-D-0136
 Assembly Ratings: 1 and 2 hr (See Item 2)
 Nominal Joint Width: 1 in.
 L Rating At Ambient - Less Than 1 CFMLR/FI
 L Rating At 400°F - Less Than 1 CFMLR/FI
 Class II Movement Capabilities: 19% Compression and Extension

1. **Floor Assembly** - The fire-rated steel deck/concrete floor assembly shall be constructed of the materials and in the manner described in the individual Floor-Ceiling Design in the UL Fire Resistance Directory and shall include the following construction features:
 A. **Steel Floor and Form Units** - Max 3 in. (76 mm) deep galv steel fluted floor units.
 B. **Concrete** - Min 2-1/2 in. (64 mm) thick reinforced concrete, as measured from the top plane of the floor units.
 C. **Roof Assembly** - (Not Shown) - An alternate to the floor assembly item 1), the fire-rated steel deck/rock wool assembly may be used. The roof assembly shall be constructed of the materials and in the manner described in the individual P500 Series Roof-Ceiling Design in the UL Fire Resistance Directory. The hourly fire rating of the roof assembly shall be equal to or greater than the hourly fire rating of the wall assembly. The roof assembly shall include the following construction features:
 A. **Steel Roof Deck** - Max 3 in. (76 mm) deep galv steel fluted roof deck.
 B. **Roof Insulation** - Min 2-1/4 in. (57 mm) thick poured insulating concrete, as measured from the top plane of the steel roof deck.
 C. **Roof Covering** - Hot-mopped or cold-application materials compatible with insulating concrete.
 2. **Wall Assembly** - The 1 or 2 hr fire-rated gypsum wallboard/insulation assembly shall be constructed of the materials and in the manner described in the individual L400 Series Wall or Partition Design in the UL Fire Resistance Directory and shall include the following construction features:
 A. **Floor Runners** - (See Shown) Floor runners of wall assembly shall consist of min No. 25 gauge galv steel channels sized to accommodate steel studs.

Specified Technologies Inc., 210 Evans Way Somerville, NJ 08876
 Registered country of Underwriters Laboratories, Inc.
 Created or Revised: July 5, 2023
 (800)992-1180 • (908)262-8000 • FAX: (908)231-8418 • E-Mail: techserv@stfcorp.com • Website: www.stfcorp.com
 HW-D-0136
 PAGE 1 OF 3

A1. **Alternate Forming Material-Spray Applied Fire Resistive Material** - (Not Shown)-As an alternate to the mineral wool batt insulation (Item 3A), a min 4-7/8 in. (124 mm) or 6-15/16 in. (156 mm) depth of spray applied fire resistive material may be installed in the flutes of the steel floor or roof deck between the top of the slotted ceiling runner and the steel deck for the 1 and 2 hr fire ratings, respectively. The spray applied fire resistive material is to be finished flush with the valleys of the steel floor or roof deck and flush with the gypsum board surface on both sides of the wall to leave a min 1 in. (25 mm) gap above the top of the gypsum board. The spray applied fire resistive material is mixed with water in accordance with the mixing instructions on the bag.
ISOLATEK INTERNATIONAL - Type 300, Type II
 When Type 300 material is used, the minimum average density of the material shall be 17.5 pcf (208 kg/m³) with a minimum individual density of 16 pcf (224 kg/m³). When Type II material is used, the minimum average density of the material shall be 13 pcf (208 kg/m³) with a minimum individual density of 11 pcf (178 kg/m³). See Design Information Section in Volume 1 of the Fire Resistance Directory for method of density determination.
GCP APPLIED TECHNOLOGIES INC. - MK-6H-V
 When MK-6H-V material is used, the minimum average density of the material shall be 15 pcf (240 kg/m³) with a minimum individual density of 14 pcf (224 kg/m³). See Design Information Section in Volume 1 of the Fire Resistance Directory for method of density determination.
 B. **Forming Material** - Min 5/8 in. (16 mm) or 1-1/4 in. (32 mm) wide sections of mineral wool batt insulation for 1 or 2 hr rated assemblies, respectively. Mineral wool batt insulation cut into strips, compressed 50 percent in thickness and installed flush with both surfaces of wall.
INDUSTRIAL INSULATION GROUP L.L.C. - MiniWood-1200 Safing
JOHNS MANVILLE - Safing
ROCK WOOL MANUFACTURING CO. - Delta Board
ROCKWOOL MALAYSIA SDN BHD - SAFE
ROCKWOOL - SAFE
THERMAFIBER INC. - Type GAF
 C. **Fill, Void or Cavity Material-Sealant** - Min 1/8 in. (3.2 mm) wall thickness or 1/16 in. (1.6 mm) dry thickness of fill material spray applied to cover the forming material on each side of the wall in the flutes of the steel floor or roof deck and between the top of the wall and the bottom of the steel deck. Non 10 in. (25 mm) wall thickness or 1/16 in. (1.6 mm) dry thickness of fill material shall overlap a min 1/2 in. (13 mm) onto gypsum board and onto the steel deck on both sides of wall.
SPECIFIED TECHNOLOGIES INC. - SpecSeal AS200 Elastomeric Spray
 * Indicates such products shall bear the UL or cUL Certification Mark for jurisdictions employing the UL or cUL Certification (such as Canada), respectively.

Specified Technologies Inc., 210 Evans Way Somerville, NJ 08876
 Registered country of Underwriters Laboratories, Inc.
 Created or Revised: July 5, 2023
 (800)992-1180 • (908)262-8000 • FAX: (908)231-8418 • E-Mail: techserv@stfcorp.com • Website: www.stfcorp.com
 HW-D-0136
 PAGE 1 OF 3

HEAD OF WALL - UL RATED DETAIL

B. **Light Gauge Framing-Slotted Ceiling Runner** - Ceiling runner to consist of galv steel channel with slotted flanges used to accommodate steel studs. Ceiling runner installed perpendicular to direction of fluted steel floor or roof deck and secured to valleys with steel fasteners spaced max 24 in. (610 mm) OC.
BRADY CONSTRUCTION INNOVATIONS INC. - DBA SLIPTRACK SYSTEMS - SLP-TRK
CENCO, LLC - CST
CLARKRICH BUILDING SYSTEMS - Type SLT, SLT-4
MARKOWARE, DIV OF WARE INDUSTRIES INC. - Type SLT
METALITE INC. - The System
QUAL RUN BUILDING MATERIALS INC. - Slotted Deflection Track
RAM SALES L.L.C. - RAM Slotted Track
SCAFCO STEEL STUD MANUFACTURING CO
STEELEER INC. - Steeler Slotted Ceiling Runner
TELLING INDUSTRIES L.L.C. - True-Action Deflection Track
 C. **Studs** - Steel studs to be min 3-1/2 in. (89 mm) wide. Studs cut 5/4 in. (19 to 25 mm) less in length than assembly height with bottom nesting in and resting on floor runner and with top nesting in ceiling runner. Steel studs secured to slotted ceiling runner with No. 8 by 1/2 in. (13 mm) long waler head steel screws at midweight of slot on each side of wall. Stud spacing not to exceed 24 in. (610 mm) OC.
 D. **Light Gauge Framing** - Slotted Studs - Slotted steel stud to be used in conjunction with Light Gauge Framing.
 *Floor and Ceiling Runners (Item 2B) - Slotted steel studs to be min 3-1/2 in. (89 mm) wide. Slotted steel studs cut 1/2 in. to 3/4 in. (13 to 19 mm) less in length than assembly height with bottom nesting in and secured to both ceiling and floor runners. Ceiling runner secured to preformed slot within steel stud by means of No. 10 by 3/4 in. (19 mm) long low profile head steel screw. Floor runner attached to bottom of steel stud by means of No. 8 by 1/2 in. (13 mm) long pan head steel screw. Slotted steel stud spacing not to exceed 24 in. (610 mm) OC.
STEELEER INC. - Steeler Slotted Stud
 E. **Gypsum Board** - Gypsum board sheets installed to a min total 5/8 in. (16 mm) or 1-1/4 in. (32 mm) thickness on each side of wall for 1 and 2 hr fire rated assemblies, respectively. Wall to be constructed in the individual L400 Series Design in the UL Fire Resistance Directory, except that a max 1 in. (25 mm) gap shall be maintained between the top of the wallboard and the bottom surface of the steel floor or roof deck and the top of the steel deck shall be installed into the studs at the hourly fire rating of the joint system is equal to the hourly fire rating of the wall.
 F. **Joint System** - Max separation between bottom of floor or roof deck and top of gypsum board (at time of installation of joint system) is 1 in. (25 mm). The joint system is designed to accommodate a max 18.75 percent compression or extension from its installed width. The joint system shall consist of forming and fill materials in the flutes of the steel floor or roof deck and between the top of the wallboard and bottom of the steel deck, as follows:
 A. **Forming Material** - Min 5/8 in. (16 mm) or 1-1/4 in. (32 mm) wide sections of mineral wool batt insulation for 1 or 2 hr fire rated assemblies, respectively, cut to the shape of the fluted deck and installed into the flutes of the steel floor or roof deck between the top of the slotted ceiling runner and the steel deck. The mineral wool batt insulation is to be compressed min 14.2 percent in depth such that it is flush with the gypsum board surface on both sides of the wall.
INDUSTRIAL INSULATION GROUP L.L.C. - MiniWood-1200 Safing
JOHNS MANVILLE - Safing
ROCK WOOL MANUFACTURING CO. - Delta Board
ROCKWOOL MALAYSIA SDN BHD - SAFE
ROCKWOOL - SAFE
THERMAFIBER INC. - Type GAF

Specified Technologies Inc., 210 Evans Way Somerville, NJ 08876
 Registered country of Underwriters Laboratories, Inc.
 Created or Revised: July 5, 2023
 (800)992-1180 • (908)262-8000 • FAX: (908)231-8418 • E-Mail: techserv@stfcorp.com • Website: www.stfcorp.com
 HW-D-0136
 PAGE 2 OF 3

Hard-Wired Exit Sign - Plastic with Emergency Lights, Red Letters

Safely mark all exits, even in power failures.

- High intensity, adjustable LED lamps go on when the power goes off.
- For office, restaurant and retail areas.
- 1.5 hour back-up battery for power outages. Battery automatically recharges.
- Hard-wired units stay lit.
- Bright long-life LED never needs changing.
- Single or double-sided signs can be ceiling, wall or flush mounted. Arrows snap out.

Q. More Images

MODEL NO.	DESCRIPTION	LETTER COLOR	SIZE H x W x D	PRICE EACH	1	4	8+	IN STOCK SHIPS TODAY
H-0045	Plastic w/ Lights	Red	8 1/2 x 21 x 4"	\$115	\$105	\$95	1	ADD

120/277 VAC, UL/UL LISTED.

PLASTIC

- Each high intensity LED lights a large foot path.
- Hard-wired unit automatically recharges battery.
- Includes back-up battery for power outages.

MODEL NO.	DESCRIPTION	SIZE H x W x D	PRICE EACH	1	3	5+	ADD TO CART
H-2260	Plastic	4 1/2 x 12 1/2 x 3 1/2"	\$60	\$57	\$54	1	ADD

LED EMERGENCY LIGHTS
 120/277 VAC, UL LISTED.

PROJECT DATA

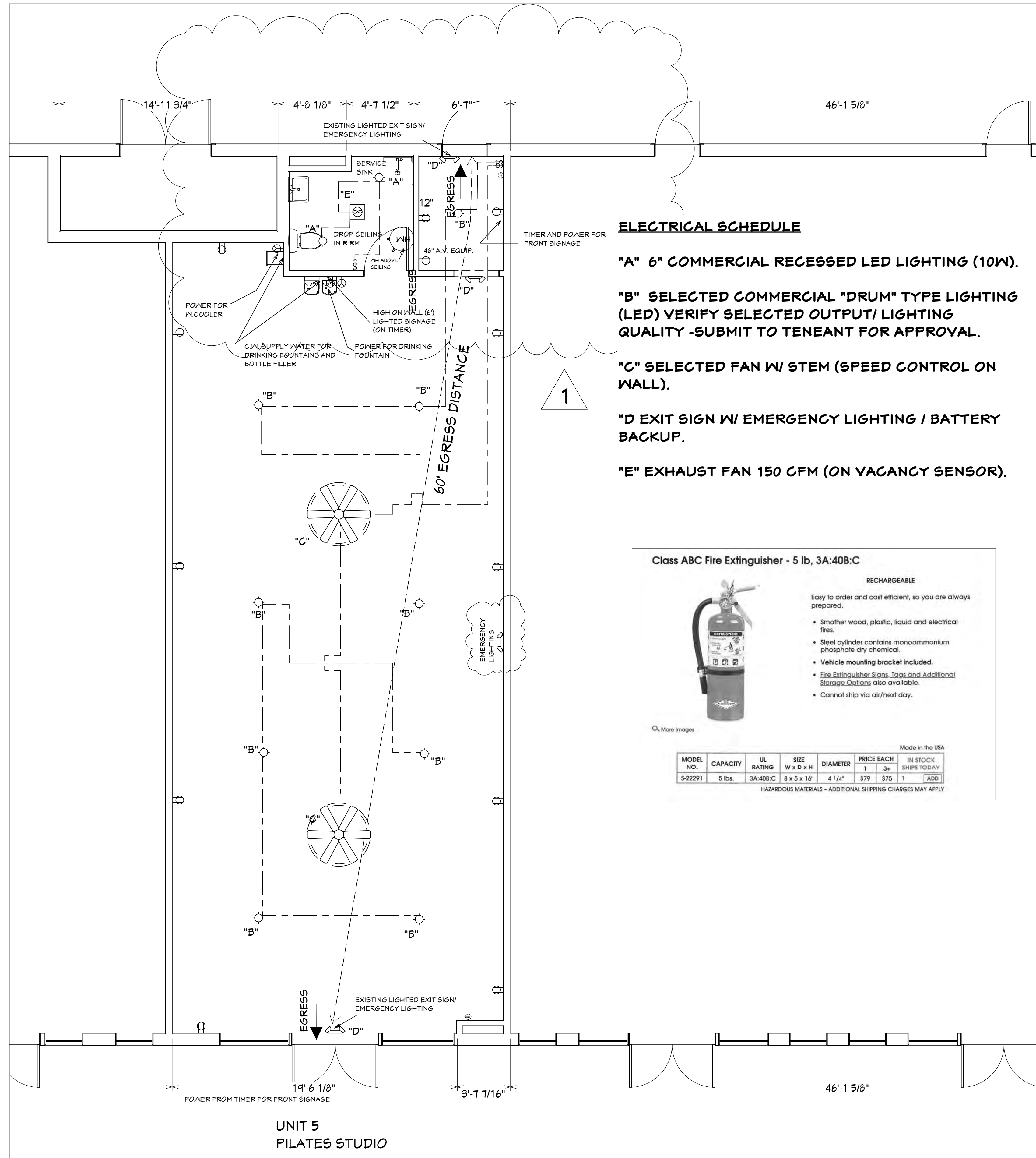
SQUARE FOOTAGE (GROSS): 1376
 OCCUPANCY GROUP: ASSEMBLY A-3
 OCCUPANCY LOAD:
 USE - EXERCISE WITHOUT EQUIPMENT (PER NFPA) 1260 SQ. FT. (NET) / 15 = 84
 OVER 50 OCCUPANCY LOAD - TWO EXITS REQUIRED

FLOOD ZONE INFO:
 BASE FLOOD ZONE 9.0 NAVD (AE9)
 DESIGN FLOOD ELEVATION 10.0
 LOWEST FLOOR ELEVATION 10.1 NAVD

TYPE OF CONSTRUCTION: IIIB FIRE SPRINKLERED NFPA 13 ONE STORY BUILDING

COPYRIGHT © 2026

THE DRAWINGS, DESIGNS AND INFORMATION REPRESENTED HEREIN ARE THE EXCLUSIVE PROPERTY OF FLEMING & ASSOCIATES ARCHITECTURAL DESIGN, INC. AND ARE NOT TO BE USED, DUPLICATED OR OTHERWISE COPIED WITHOUT THE WRITTEN PERMISSION OF FLEMING & ASSOCIATES ARCHITECTURAL DESIGN, INC. UNAUTHORIZED USE WILL BE PROSECUTED.



ELECTRICAL SCHEDULE

"A" 6" COMMERCIAL RECESSED LED LIGHTING (10W).

"B" SELECTED COMMERCIAL "DRUM" TYPE LIGHTING (LED) VERIFY SELECTED OUTPUT/ LIGHTING QUALITY -SUBMIT TO TENEAAT FOR APPROVAL.

"C" SELECTED FAN W/ STEM (SPEED CONTROL ON WALL).

"D" EXIT SIGN W/ EMERGENCY LIGHTING / BATTERY BACKUP.

"E" EXHAUST FAN 150 CFM (ON VACANCY SENSOR).

Class ABC Fire Extinguisher - 5 lb, 3A:40B:C

RECHARGEABLE

Easy to order and cost efficient, so you are always prepared.

- Smother wood, plastic, liquid and electrical fires.
- Steel cylinder contains monoammonium phosphate dry chemical.
- Vehicle mounting bracket included.
- Fire Extinguisher Signs, Tags and Additional Storage Options also available.
- Cannot ship via air/next day.

Made in the USA

MODEL NO.	CAPACITY	UL RATING	SIZE W x D x H	DIAMETER	PRICE EACH	1	3+	IN STOCK SHIPS TODAY
S-22291	5 lbs.	3A:40B:C	8 x 5 x 16"	4 1/4"	\$79	\$75	1	ADD

HAZARDOUS MATERIALS - ADDITIONAL SHIPPING CHARGES MAY APPLY

LIFE SAFETY PLAN

1/4" = 1'-0"

ASSEMBLY OCCUPANCY :
 REQUIRED NUMBER OF EXITS FOR OCCUPANT LOAD GREATER THAN 50 = 2
 THIS PLAN 84 OCCUPANT LOAD REQUIRED EXITS = 2
 MAXIMUM TRAVEL DISTANCE WITH FIRE SPRINKLERS 200' THIS PLAN 62'

REVISION 1 : 3-30-2026 TC 1 CODE COMPLIANCE REVIEW 3-27-2026

FLEMING & ASSOCIATES
 ARCHITECTURAL DESIGN
 INC. 1047 5 TH. AVENUE NORTH
 NAPLES, FLORIDA 34102
 TEL: (239) 495-1102 E-MAIL: ARCFLEMING@YAHOO.COM
 LIC # AA 0002690

TENANT SPACE FOR:
 LVL FITNESS WELLNESS NAPLES, LLC.
 2160 AIRPORT ROAD NORTH (UNIT 105)
 NAPLES FLORIDA 34105

BRIAN K. FLEMING
 REGISTERED PROFESSIONAL ARCHITECT
 STATE OF FLORIDA
 BRANK K. FLEMING
 AR0015062
 REGISTERED

DRAWN T.C.
CHECKED B.F.
DATE 3-12-26
SCALE AS SHOWN
JOB NO. 26020
SHEET 4 OF 6

RECTORSEAL
A 3M Intellectual Property

PRODUCT DATA SHEET

METACAULK® BOX GUARD™
Fire-rated Insert for Electrical Boxes

Description
Metacaulk® Box Guard™ is a single component fire rated insert for use with electrical boxes. It is inserted on the inside back wall of an electrical box, and is a highly intumescent firestop material. When exposed to fire, Metacaulk Box Guard will expand forming a char that will seal off the opening and prevent the spread of flames and limit the temperature rise on the unexposed surfaces. Metacaulk Box Guard is applied by hand, and must comply with NEC 314.16 or other applicable codes.

Applications
Use Metacaulk Box Guard on inside back panel of metallic electrical boxes to maintain the integrity of fire rated wall assemblies restricting the passage of flames and limiting the temperature rise on the unexposed surfaces. When Metacaulk Box Guard is used as directed, the horizontal separation between outlet boxes on opposite sides of the wall may be less than 24 inches.

Packaging

Code	Size	Qty. per Case	Dimensions (in)	Cubic Feet
66366	Single - 1-13/16" x 2-13/16" x 1/4" (47 mm x 71 mm x 6 mm)	50	10x6x4	.09
66367	Double - 3-3/4" x 3-1/16" x 1/4" (94 mm x 95 mm x 6 mm)	50	4x8x8	.39
66369	Double for 5.5 box - 4-3/8" x 4-3/8" x 1/4" (111 mm x 111 mm x 6 mm)	50	8x8x5	.39

Installation Data
Metacaulk Box Guard is easy to install. Make sure rear surface is clean, dry and not contaminated. Remove protective paper from tape and stick pad to inside back wall of electrical box. Center pad from top and bottom of box. Install switch, or outlet. Use the single pad for a single box (2" x 4"), and double pad for double box (4" x 4"), and 3/4" x 4" x 1/4" pad for 4-1/2" x 4-1/2" box. **Make sure installation complies with NEC 314.16 or other applicable codes.**

Consult UL Product IQ Directory for complete instructions and system listings.

*If necessary, a maximum 1/2" hole may be created on the pad may be cut from one edge to allow easier access to the electrical box ground wires.

NOTE: Not to be used on plastic boxes. For additional information refer to UL Product IQ Directory. Retain a copy of the Product Data Sheet for review by the inspector.

Characteristics | Features

- Easy to install
- Drip effective
- Highly intumescent
- Adheres to back of electrical box
- Non-conductive
- Dielectric Breakdown Voltage 225(Volts) (ASTM D148)
- STC Rating 53

Testing Data
Metacaulk Box Guard is classified by Underwriters Laboratories, Inc. under Wall Opening Protective Material as found in the Fire Resistance Directory. For specific test criteria see UL Product IQ or call RectorSeal.

Metacaulk Box Guard was tested in accordance with UL 263/ ASTM E119 standard, "Fire Tests of Building Construction and Materials". It meets the requirements of all model building codes. Metacaulk Box Guard was tested to a positive pressure at a minimum of 21 inches of water in accordance with ASTM E814 (UL 1479) test standards.

Complies with Accelerated Aging and High Humidity Environmental Exposure Tests for Intumescent Material per ASTM E814 (UL 1479) Fire Test of Through-Penetration Firestops.

Sound Transmission Class (STC) 53 - The test was performed in accordance with ASTM E90, Standard Test Method for Laboratory Measurement of Airborne Sound Transmission Loss of Building Partitions and Elements.

Tested by a third party independent laboratory to the ASTM G21 standard with Fungal Growth Rating results of zero.

Tested to standards of CAN/ULC S715, S701 and S702.

Storage & Handling
Metacaulk Box Guard should be stored in a dry environment. A stock rotation program is recommended.

Limitations
To be used only in the tested configurations or as recommended by RectorSeal.

Precautionary Statements
Refer to Safety Sheet (SDS).

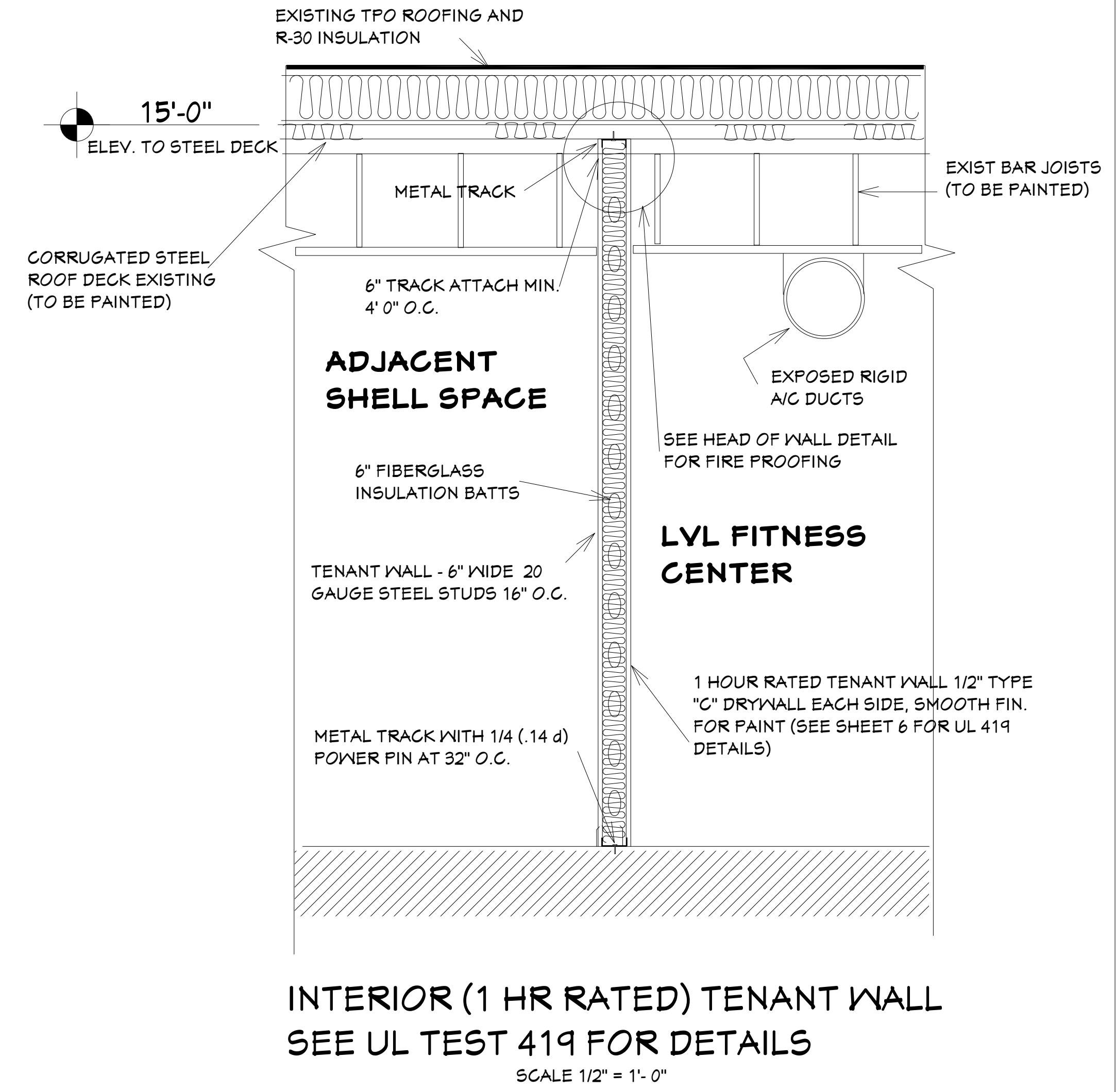
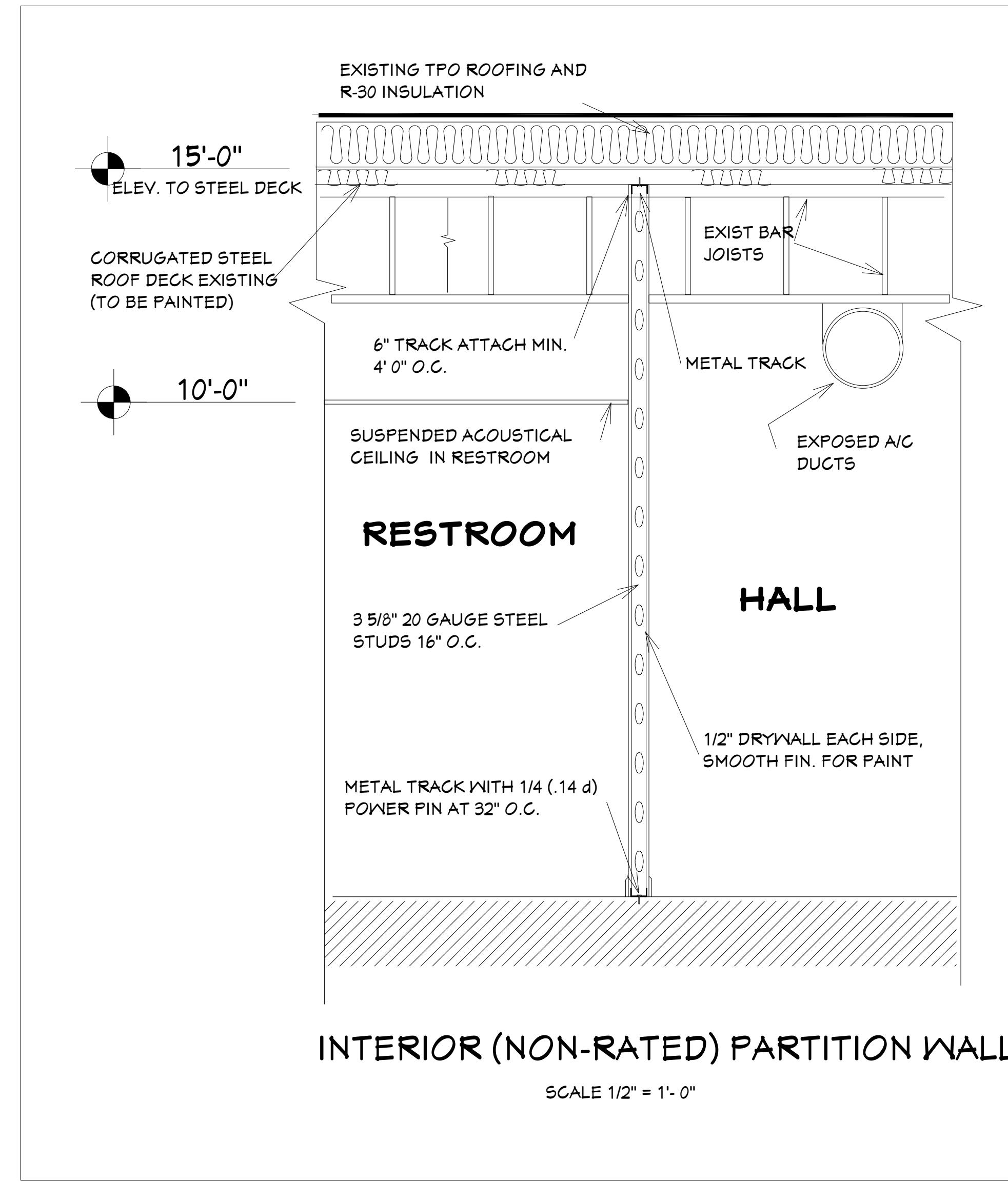
FOR CHEMICAL EMERGENCY, SPILL, LEAK, FIRE, EXPOSURE OR ACCIDENT, CALL CHEMTREC - DAY OR NIGHT 1-800-424-9300. KEEP OUT OF REACH OF CHILDREN.
For additional technical information call 703-776-1800-33143.

Limited Warranty
30YR WARRANTY

Manufactured by RectorSeal, LLC
2601 Spennick Drive • Houston, TX 77055, USA • 800-231-3345 • Fax 800-441-0051 • rctorseal.com

© 2016 RectorSeal, LLC. RectorSeal, the RectorSeal logo, and the RectorSeal logo are trademarks of RectorSeal, LLC. All rights reserved. RectorSeal, the RectorSeal logo, and the RectorSeal logo are trademarks of RectorSeal, LLC. All rights reserved. RectorSeal, the RectorSeal logo, and the RectorSeal logo are trademarks of RectorSeal, LLC. All rights reserved.

FIRE PROOFING ELECTRICAL BOXES IN RATED WALLS



RECTORSEAL
A 3M Intellectual Property

PRODUCT DATA SHEET

METACAULK® 1000
Highly Intumescent Firestop Sealant

Description
Metacaulk® 1000 is a single component, general purpose fire rated sealant and smoke seal for construction joints and through-penetrations. Metacaulk 1000 is a water based, extremely intumescent, non-sag caulking grade sealant that is easy to apply. It cures to an elastomeric seal that is suitable where dynamic movement is expected.

In the event of a fire, Metacaulk 1000 will prevent the spread of flames, smoke, hot gases and water through joint openings and through-penetrations. Metacaulk 1000 systems are rated for 1, 2, 3 and 4 hours in accordance with the ASTM E814 (UL208), ASTM E1966 (UL 2079) and CAN/ULC-S715 test standards. Metacaulk 1000 is protected in a wet stage as well as in a dry stage against mold growth with a combination of biocides. Tested by a third party independent laboratory to the ASTM G21 standard with Fungal Growth Rating results of zero.

Applications
Metacaulk 1000 can be used in interior applications as a general purpose fire rated sealant and smoke seal for construction joints, through penetrations and blank openings on both vertical and horizontal surfaces. Use Metacaulk 1000 to prevent the spread of fire and smoke through joints in fire rated gypsum wallboard partitions, concrete block or concrete walls and/or concrete or corrugated steel deck floor/ceiling assemblies. Metacaulk 1000 is also an excellent fire rated acoustical sealant and can be used in areas under constant vibration or movement to reduce the transfer of noise through assemblies. Metacaulk 1000 can also be used on various penetrations such as EMT, telephone & power cables, insulated pipes, etc. in concrete floors and walls, gypsum walls as well as wood floors.

Characteristics | Features

- Water based
- Excellent freeze-thaw
- Flexible set
- Highly intumescent
- Paintable
- VOC compliant
- Safe and easy to use
- 3 Year shelf life

Packaging

Code	Size	Qty. per Case	Dimensions (in)	Cubic Feet
66440	10.3 oz cartridge	12	8x6x12	.34
66312	20.2 oz foil pack	12	9x14x7	.51
66303	30 oz. cartridge	12	11x9x17	.97
66309	5 Gallon	1	13 dia x14	1.08

Installation Data
Install Metacaulk 1000 using standard caulking techniques or trowel from pails. Metacaulk 1000 may also be pumped from the pails. When damming materials are needed, use only materials approved for the specific application.

Material Properties

Asbestos Fillers	None
Solvents	None
Hazardous ingredients	None
Application	Caulking Gun or Trowel
Application Temperature between	40° - 120° F 4° C - 49° C

Activation of Intumescent

Expansion Begins	375° (190° C)
Expansion Complete	570° - 1000° 302° C - 593° C

Color Red

Cure Time 3 to 4 weeks (at 77°/25° C)

Density -11 lbs/gal (-13.80 kg)

Electric Yes

Freeze /Thaw Excellent

Skin Over Time 30 min (at 77°/25° C)

pH Value 6.5 to 7

Volume Coverage

for 10.3 oz tube	18 cu. in. (286 ml)
for 20.2 oz foil packs	36 cu. in. (597 ml)
for 30 oz. tube	54 cu. in. (897 ml)
for 5 gallon	755 cu. in. (12.4 liter)

VOC <10 g/L

ASTM E 814, UL 213 Tunnel Test

Flame Spread	0
Smoke Index	0

Complies to Required International Exposure Testing of Accelerated Aging and High Humidity as per UL 1479 Fire Test of Through-Penetration Firestops.

UL LISTED PRODUCT
FBC
FPM

METACAULK® 1000
Highly Intumescent Firestop Sealant

Material Properties

Asbestos Fillers	None
Solvents	None
Hazardous ingredients	None
Application	Caulking Gun or Trowel
Application Temperature between	40° - 120° F 4° C - 49° C

Activation of Intumescent

Expansion Begins	375° (190° C)
Expansion Complete	570° - 1000° 302° C - 593° C

Color Red

Cure Time 3 to 4 weeks (at 77°/25° C)

Density -11 lbs/gal (-13.80 kg)

Electric Yes

Freeze /Thaw Excellent

Skin Over Time 30 min (at 77°/25° C)

pH Value 6.5 to 7

Volume Coverage

for 10.3 oz tube	18 cu. in. (286 ml)
for 20.2 oz foil packs	36 cu. in. (597 ml)
for 30 oz. tube	54 cu. in. (897 ml)
for 5 gallon	755 cu. in. (12.4 liter)

VOC <10 g/L

ASTM E 814, UL 213 Tunnel Test

Flame Spread	0
Smoke Index	0

Complies to Required International Exposure Testing of Accelerated Aging and High Humidity as per UL 1479 Fire Test of Through-Penetration Firestops.

UL LISTED PRODUCT
FBC
FPM

Installation Data
Install Metacaulk 1000 using standard caulking techniques or trowel from pails. Metacaulk 1000 may also be pumped from the pails. When damming materials are needed, use only materials approved for the specific application.

Material Properties

Asbestos Fillers	None
Solvents	None
Hazardous ingredients	None
Application	Caulking Gun or Trowel
Application Temperature between	40° - 120° F 4° C - 49° C

Activation of Intumescent

Expansion Begins	375° (190° C)
Expansion Complete	570° - 1000° 302° C - 593° C

Color Red

Cure Time 3 to 4 weeks (at 77°/25° C)

Density -11 lbs/gal (-13.80 kg)

Electric Yes

Freeze /Thaw Excellent

Skin Over Time 30 min (at 77°/25° C)

pH Value 6.5 to 7

Volume Coverage

for 10.3 oz tube	18 cu. in. (286 ml)
for 20.2 oz foil packs	36 cu. in. (597 ml)
for 30 oz. tube	54 cu. in. (897 ml)
for 5 gallon	755 cu. in. (12.4 liter)

VOC <10 g/L

ASTM E 814, UL 213 Tunnel Test

Flame Spread	0
Smoke Index	0

Complies to Required International Exposure Testing of Accelerated Aging and High Humidity as per UL 1479 Fire Test of Through-Penetration Firestops.

UL LISTED PRODUCT
FBC
FPM

Typical Top of Wall Installation
Step 1 Gun, trowel or pump the sealant as required to the specified depth. Properly tool sealant surface flush with the wall.
Consult UL Directory for complete instructions and system listings.

Testing Data
For specific test criteria, refer to the UL Product IQ and Intek Directory of Building Products or call RectorSeal.

Metacaulk 1000 was tested at positive pressure with a minimum 0.01 (2.5 Pa) inches water and in accordance with ASTM E814 (UL 1479), ASTM E1966 (UL 2079) and tested with a pressure differential of 50 Pa between the exposed and the unexposed surfaces with the higher pressure on the exposed side in accordance with CAN/ULC S715, S701 and S702 testing standards. Tested to the time-temperature requirements of ASTM E119 (UL 263). Tested by a third party independent laboratory to the ASTM G21 standard with Fungal Growth Rating results of zero.

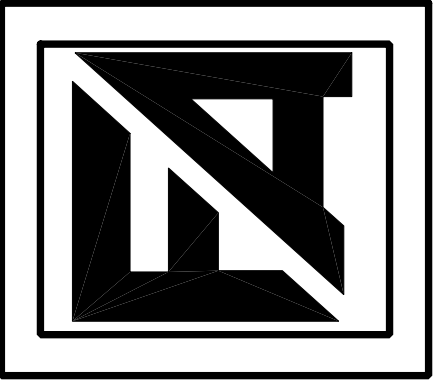
Sound Transmission Class (STC) 42 - The test was performed in accordance with ASTM 90, Standard Test Method for Laboratory Measurement of Airborne Sound Transmission Loss of Building Partitions and Elements.

Complies to Required International Exposure Testing of Accelerated Aging and High Humidity as per UL 1479 Fire Test of Through-Penetration Firestops.

UL LISTED PRODUCT
FBC
FPM

Fire Proofing Piping / Conduit in Rated Walls

FLEMING & ASSOCIATES
ARCHITECTURAL DESIGN
INC. 1047 5 TH. AVENUE NORTH
NAPLES, FLORIDA 34102
TEL: (239) 495-1102 E-MAIL: ARCFLEMING@YAHOO.COM
LIC # AA 0002690



TENANT SPACE FOR:
LYL FITNESS WELLNESS NAPLES, LLC.
2160 AIRPORT ROAD NORTH (UNIT 105)
NAPLES FLORIDA 34105



DRAWN T.C.
CHECKED B.F.
DATE 3-12-26
SCALE AS SHOWN
JOB NO. 26020
SHEET
6
OF 6